

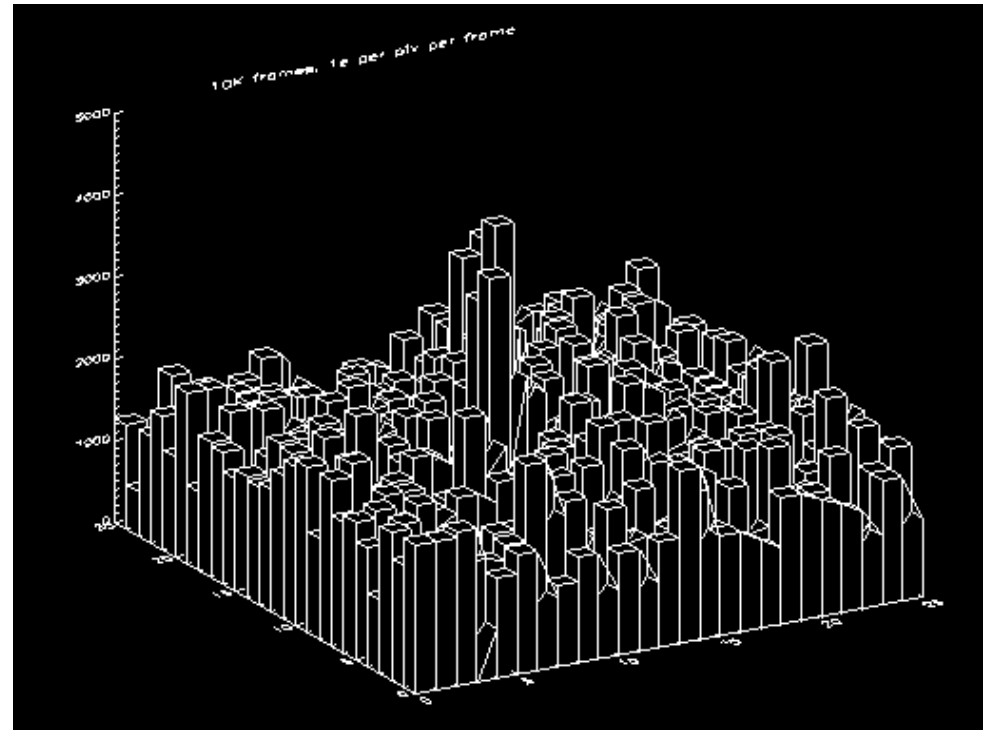
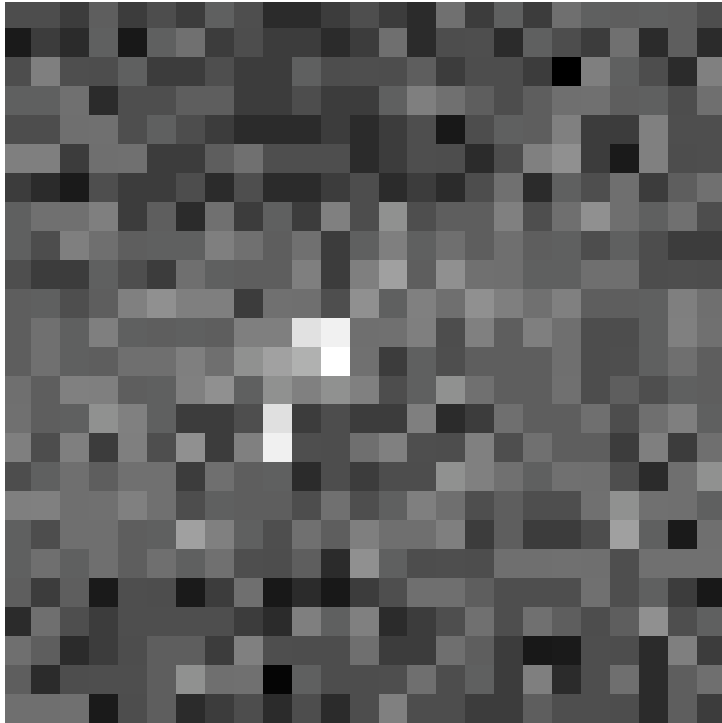
# GAIA - World's most boring viewgraph

---



# GAIA - World's 2nd most boring viewgraph

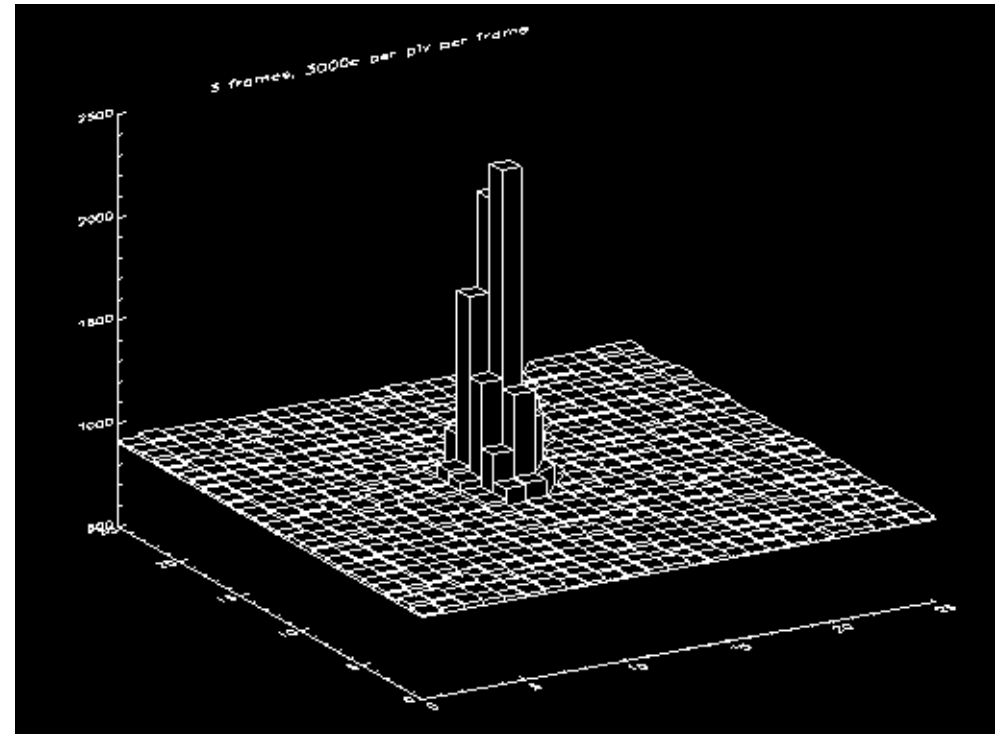
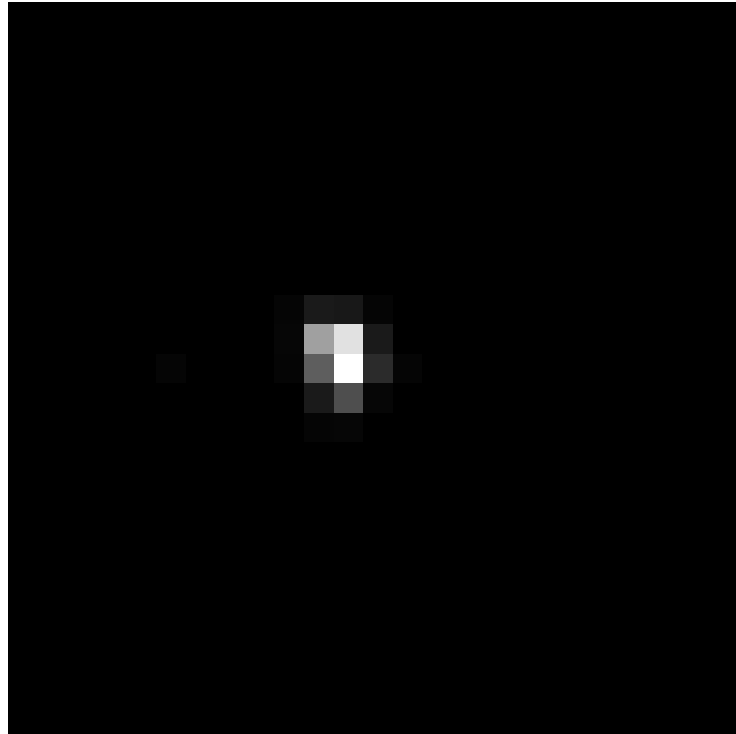
---



10,000 repeats of WMBV  
(world's most boring viewgraph)

# GAIA – Same configuration, x3000 higher flux

---



3 repeats at higher flux

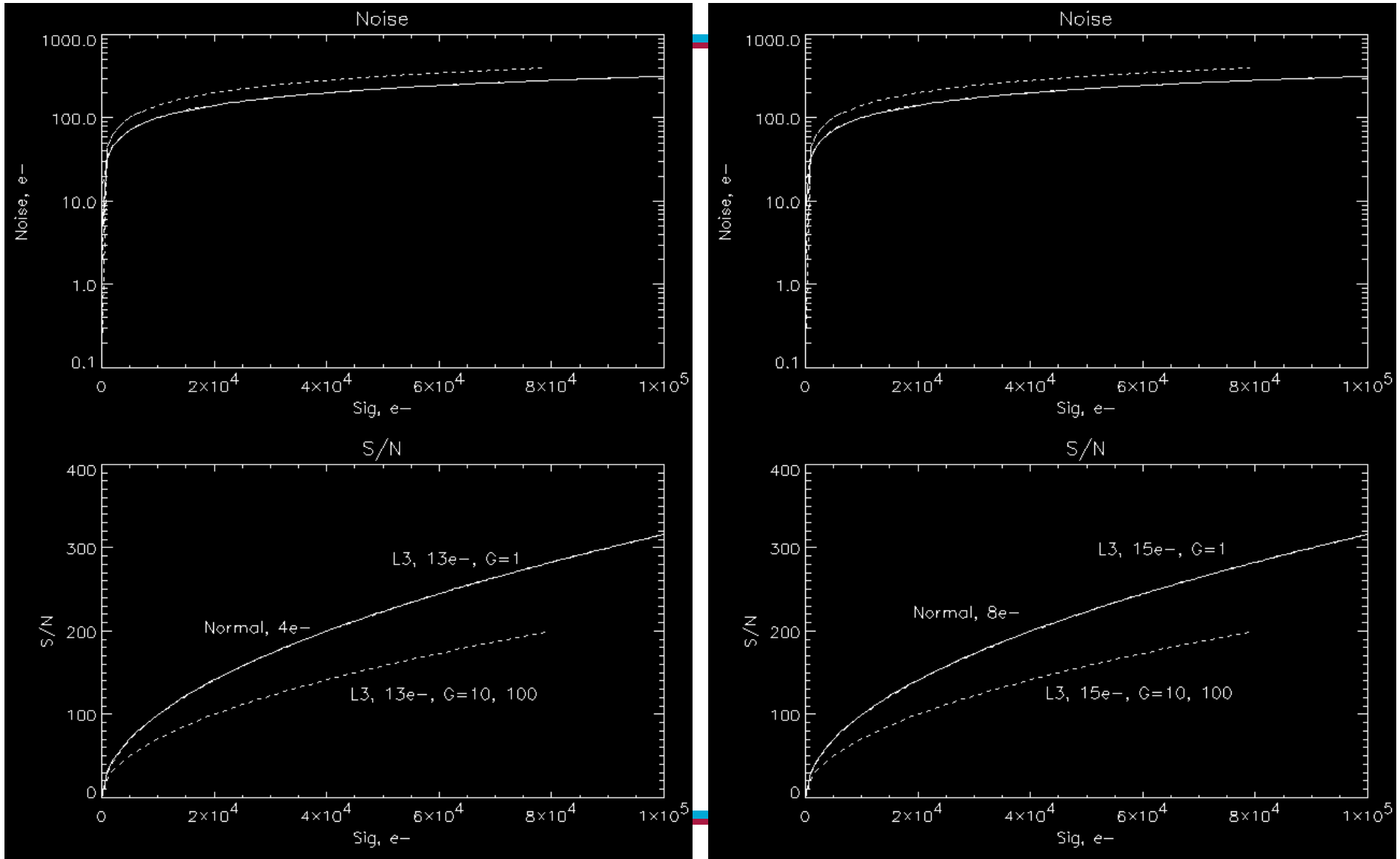
# GAIA - Experimental parameters

---

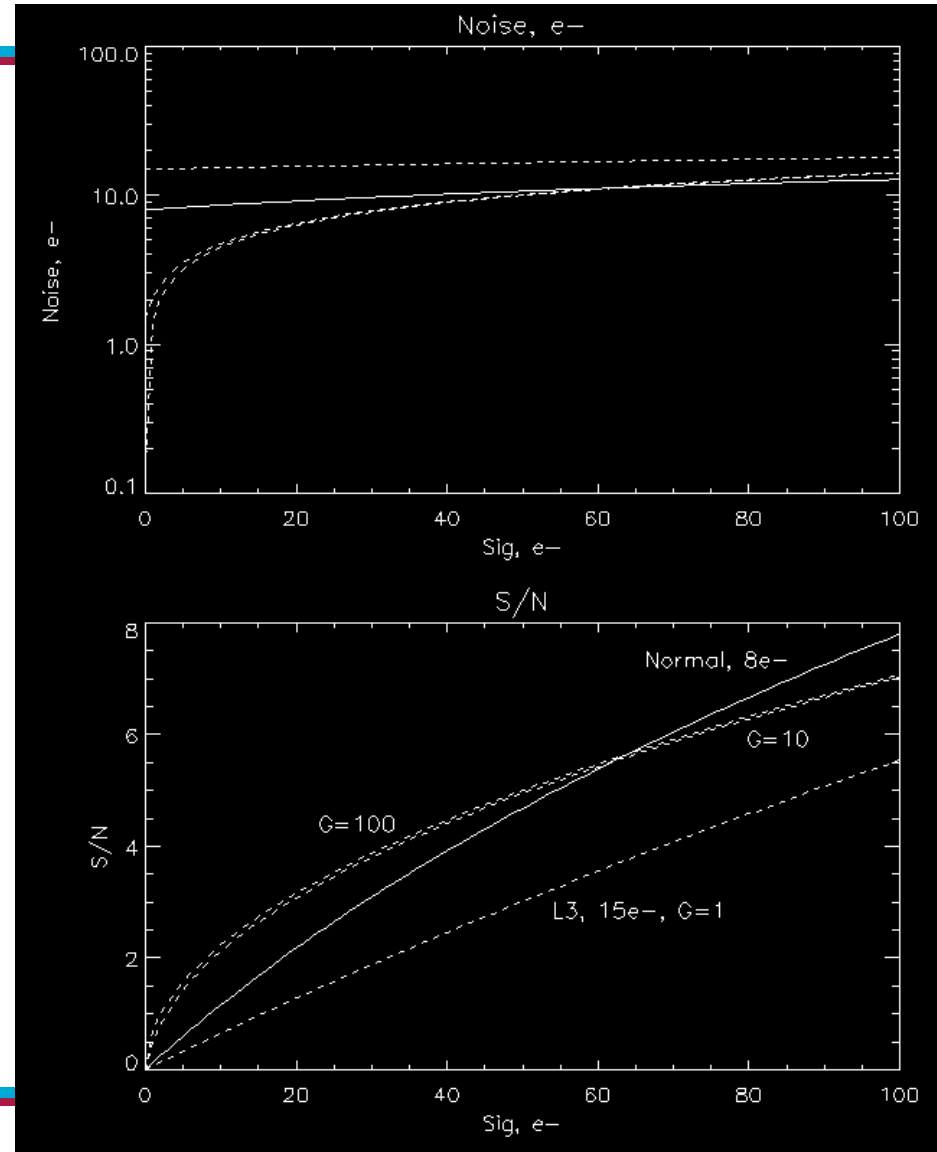
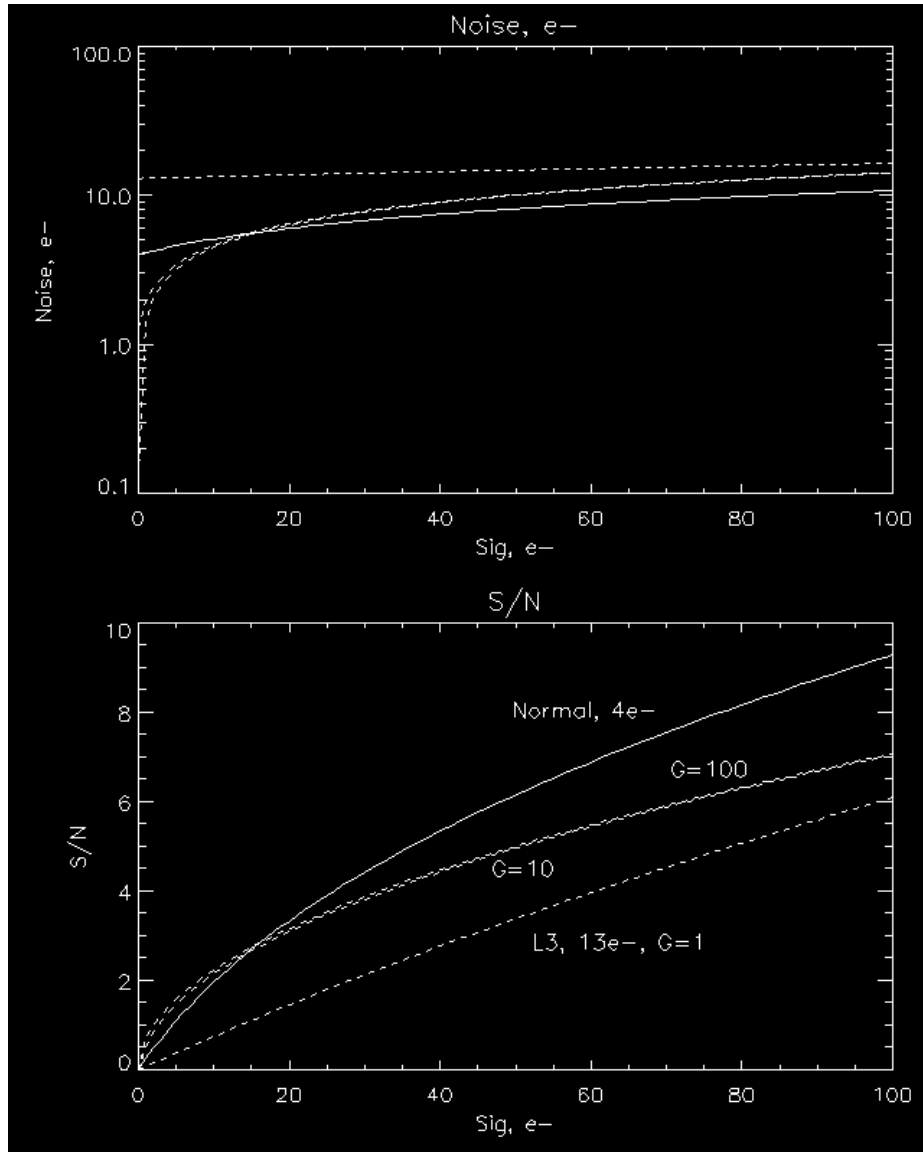
Chosen to be similar to  $M \sim 16$  star flux per pixel in order to look for low-signal artefacts

Pixel size	:	$16 \times 16 \mu\text{m}$
Temperature	:	$-40\text{C}$
Integration time	:	$100\text{ms}$
Dark Current	:	$\sim 2\text{e}^- \text{pix}^{-1} \text{frame}^{-1}$ (so noise $1.4\text{e}^- \text{pix}^{-1} \text{frame}^{-1}$ )
Readout noise	:	$\sim 20\text{e}^-$
Signal	:	$\sim 1\text{e}^- \text{pix}^{-1} \text{frame}^{-1}$
Digitisation	:	$\sim 5\text{e}^-/\text{DN}$ (so signal $\sim 0.2\text{DN} \text{pix}^{-1} \text{frame}^{-1}$ )

# GAIA - S/N Plots #1



# GAIA - S/N Plots #2



# GAIA - L3CCD Monte-Carlo

